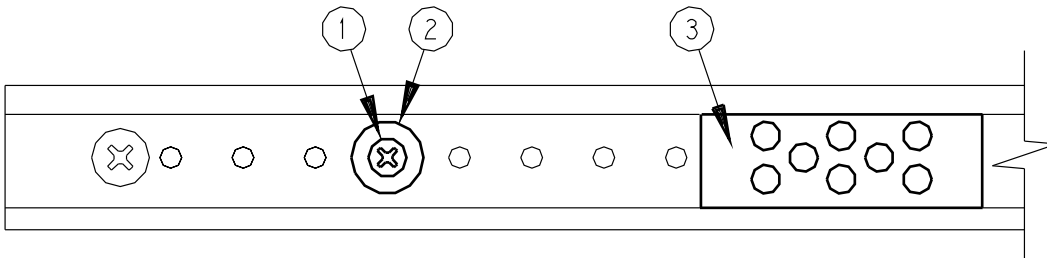


TO LOCATE REQUIRED SET OF HOLES FOR DESIRED DEGREE OF
DOOR OPENING. SEE INSTALLATION INSTRUCTION/TEMPLATE.

1. RELOCATION OF BUMPER, IF REQUIRED

- Slide bumper (3) away from post (2).
- Remove screw (1) and post (2).
- Reinstall in new hole location and tighten screw securely.
- Slide bumper (3) against post (2).



2. LOCATION ADJUSTMENT OF HOLD OPEN DEVICE WITH BUMPER OPTION

- Slide bumper (3) away from post (2).
- Remove screw (1), post (2), adjusting cam (4) and screw (5).
- Slide hold open clip (6) to required hole location.
- Reinstall screw (5) and tighten securely.
- Replace cam (4), post (2), and screw (1) and tighten securely.
- Slide bumper (3) against post (2).

